

FARROWFLOW®

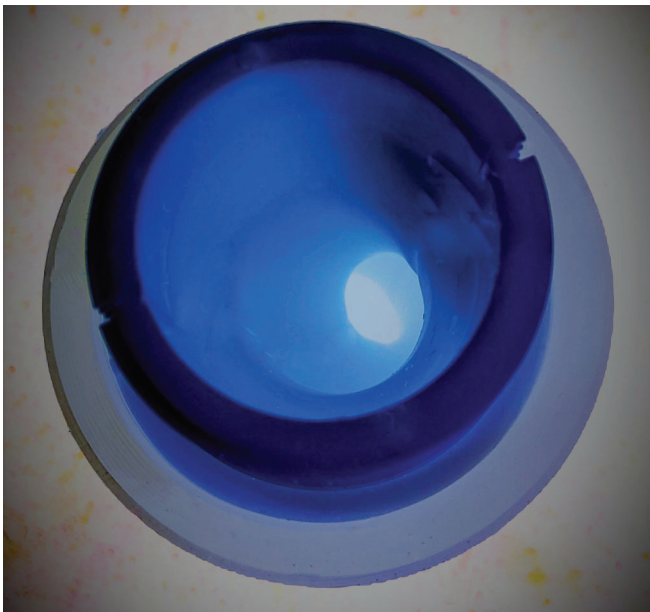
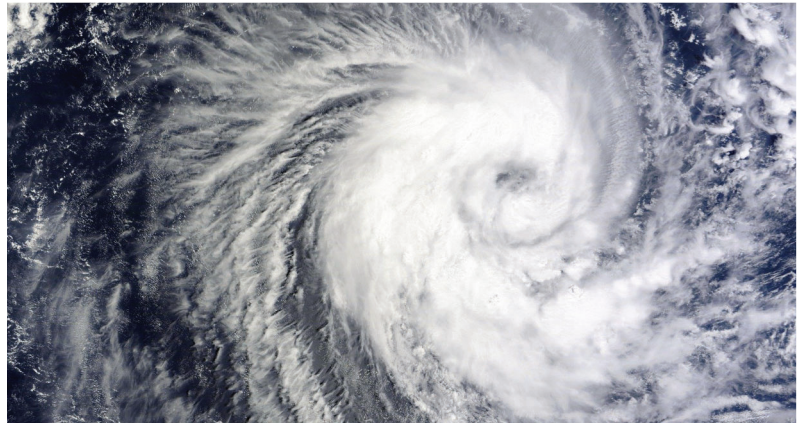
A Patented Insert for Use in Blasting



Farrow Flow®

Farrow FLOW® technology is now available with a patented insert designed to be easily installed into the air outlet of any blast machine. Once inserted, this state-of-the-art technology twists the air in a vortex motion creating an optimal mixture at the nozzle.

THE RESULT...25% wider spread at the nozzle...
25% savings in time, media and fuel consumption.
GO WITH THE FLOW!



The Science Behind the Invention

By creating a helical pattern in the air flow, Farrow FLOW® patented technology converts a small amount of pressure to increased velocity when added to traditional straight line blast pot air input. Pressure is increased by the spinning motion created inside of the blast pipe as the media and air mixture travels toward the nozzle. This rotating flow, most familiar as that of a tornado, is also known as vortex flow which causes the mixture to be pushed to the interior walls of the blast pipe before exiting the nozzle. This creates dramatically visible results when the mixture vents to atmosphere as the vortex flow media mixture exits the nozzle with a wider and more consistent spread at a higher velocity. The result: Faster, less cleanup, less media by at least 25%.



www.farrowflow.com